

ELY DISTRICTS NEW 2008 WILD HORSE HERD MANAGEMENT AREAS

National Program Office (NPO) acreage is acres reported by BLMs National Program Office as the total reported acreage for the wild horse Herd Management Area. This includes both BLM controlled land and “other” land such as private, state or other agency managed acres.

BLM acreage is the amount of acres reported by the National Program Office as exclusively under BLMs jurisdiction.

Resource Management Plan (RMP) acreage are acres reported in the newly approved management plans for each individual wild horse and burro HMA within the Nevada BLM Ely District’s jurisdiction. The acreage reported under each new HMA heading are the acres approved in the RMP that will now comprise the new HMAs.

TRIPLE B HERD MANAGEMENT AREA (HMA)

1,225,000 acres AML 250 to 518

Formerly known as Buck and Bald, Butte and Cherry Creek HMAs

Wild Horse Allowable Management Level (AML)

Buck and Bald	AML	423
Butte	AML	95
Cherry Creek	AML	0
Total AML		518

Herd Management Area Acreage

HMA	NPO Acreage Total	BLM Acreage	RMP Acreage	Acres Removed
Buck and Bald	838,925	825,611	799,500	
Butte	443,959	436,712	427,800	
Cherry Creek	37,275	35,744	35,000	3,200
	1,320,159	1,298,067	1,262,300	

In the land use planning “process”, the Ely RMP reported 57,859 less acres than the NPOs total reported acreage for these combined HMAs and 35,767 less acres than the NPOs total reported acreage for exclusive BLM managed public lands.

In creating the Triple B HMA 95,159 acres was lost from the NPOs total reported acreage for these combined HMAs and/or 35,767 acres was lost from the NPOs reported exclusive BLM managed public lands and/or a loss of 37,300 acres from the Ely RMP reported acreage. BLM “officially” removed 3,200 acres from wild horse and burro habitat.

PANCAKE HERD MANAGEMENT AREA (HMA)
 855,000 acres AML 240 to 493
 Formerly known as Monte Cristo and Sand Springs East HMAs

Wild Horse Allowable Management Level (AML)

Monte Cristo	AML 236
Sand Springs E	AML 257
Total AML	493

Herd Management Area Acreage

HMA	NPO Acreage Total	BLM Acreage	RMP Acreage
Monte Cristo	378,263	372,653	369,800
Sand Springs East	481,725	481,220	476,100
	859,988	853,873	845,900

In the land use planning “process”, the Ely RMP reported 14,088 less acres than the NPOs total reported acreage for these combined HMAs and 7,973 less acres than the NPOs reported acreage for exclusive BLM managed public lands.

In creating the Pancake HMA, 4,988 acres was lost from the NPOs total reported acreage, and/or a gain of 1,127 acres from exclusive BLM managed public lands land and/or a gain of 9,100 acres from the reported Ely RMP acreage.

EAGLE HERD MANAGEMENT AREA (HMA)
 670,000 acres AML 100-210
 Formerly known as Deer Lodge Canyon and Wilson Creek HMAs

Wild Horse Allowable Management Level (AML)

Deer Lodge Canyon	AML 50
Wilson Creek	AML 160
Total AML	210

Herd Management Area Acreage

HMA	NPO Acreage Total	BLM Acreage	RMP Acreage
Deer Lodge Canyon	108,460	106,735	105,300
Wilson Creek	686,490	670,786	624,500
	794,950	777,521	729,800

EAGLE HERD MANAGEMENT AREA (continued)

In the land use planning “process”, the Ely RMP reported 65,150 less acres than the NPOs total reported acreage for these combined HMAs and 47,721 less acres than the NPOs total reported acreage for exclusive BLM managed public lands.

In creating the Eagle HMA, 124,950 acres was lost from the NPOs total reported acreage for these combined HMAs and/or 107,521 acres was lost from the NPOs reported exclusive BLM managed public lands and/or a loss of 59,800 acres from the Ely RMP reported acreage.

SILVER KING HERD MANAGEMENT AREA

606,000 acres AML 60-128

Formerly known as Dry Lake, Rattlesnake, and Highland Peak HMA

Wild Horse Allowable Management Level (AML)

Dry Lake	AML 94
Highland Peak	AML 33
Rattlesnake	AML 1
Total AML	128

Herd Management Area Acreage

HMA	NPO Acreage Total	BLM Acreage	RMP Acreage	Acres Removed
Dry Lake	494,371	491,675	487,800	
Highland Peak	137,875	136,091	136,100	65,500
Rattlesnake	71,433	71,433	71,400	37,400
	703,679	699,199	695,300	102,900

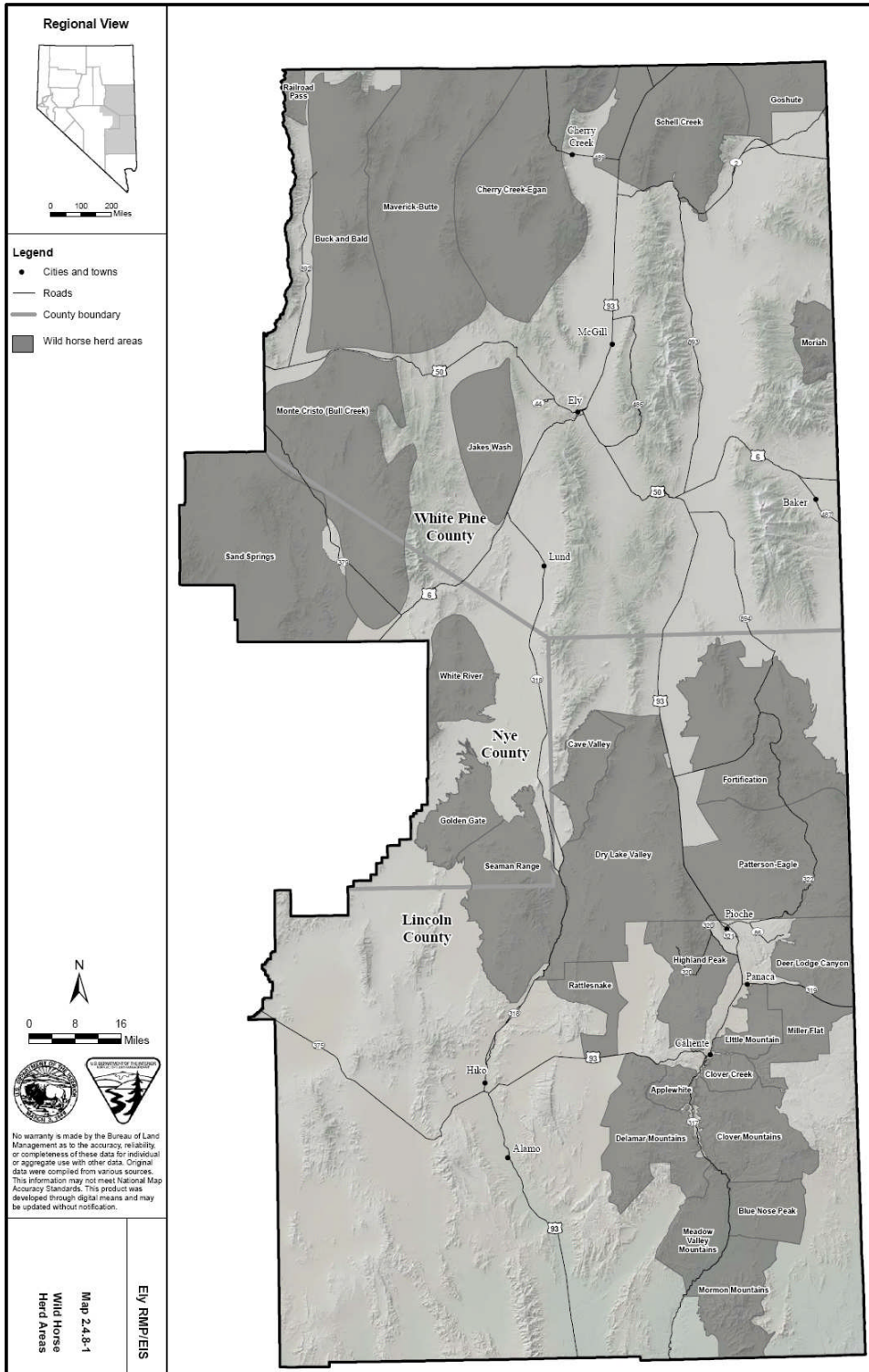
In the land use planning “process”, the Ely RMP reported 8,379 less acres than the NPOs total reported acreage for these combined HMAs and 3,899 less acres than the NPOs total reported acreage for exclusive BLM managed public lands.

In creating the Silver King HMA, 97,679 acres was lost from the NPOs total reported acreage for these combined HMAs and/or 93,199 acres was lost from the NPOs reported exclusive BLM managed public lands and/or a loss of 89,300 acres from the Ely RMP reported acreage.

BLM “officially” removed 102,900 acres from the Highland Peak and Rattlesnake HMA wild horse and burro habitat but even that loss doesn’t add up; removing 102,900 acres from the RMPs acreage only leaves 592,400 acres so somewhere in there, BLM added 14,200 acres back into the Silver King HMA.

The Antelope Herd Management Area stayed the same minus 62,900 acres being removed from the HMA acreage.

NEVADA BLMS ELY DISTRICT WILD HORSE & BURRO HERD AREAS



NEVADA BLMS ELY DISTRICTS NEW 2008 HERD MANAGEMENT AREAS

